

Alfa Spider cowl panel removal by Spiderserie4:

1. mark position of wipers in parked position (strip of masking tape along top of each wiper blade on the screen I find is the best way)



2. remove wiper arms (don't mix them up) from splines: to do this lift arm off from screen, this then allows the plastic cover to be flipped up, then put arm back on screen. Undo 13mm nut and pull off wiper arm (it can be stuck, so gentle tapping and levering with a flat head screwdriver from underneath helps) and then remove the hard rubber cap and then the soft rubber seal.

NOTE: when putting them back, leave that drain hole free on both sides, if you cover it, water will collect here and start rusting it out!





3. Remove 2 screws in corner of lower screen chrome finisher and remove chrome piece (careful of the rubber seals, just visible on the corners, don't lose them!) The screws screw into plastic fasteners pressed into the body. Note rust trying to take hold here, needs to be done, now!

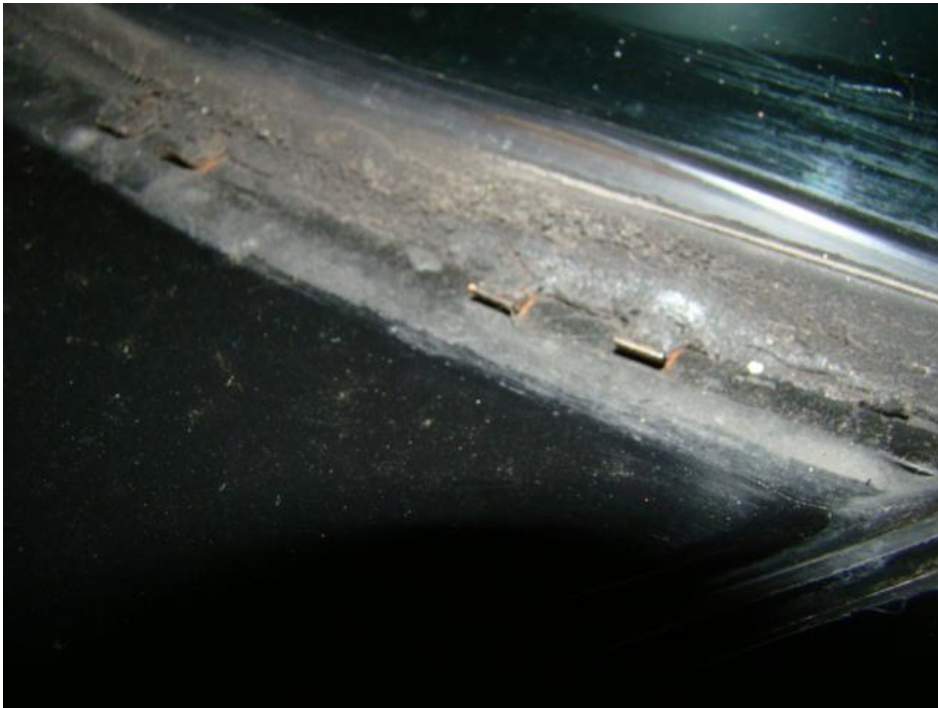




4. Remove 4 screws on front edge of cowl (under rubber seal on hood opening), these have plastic nuts underneath, which you need to hold from dropping into the abyss of the back of the engine! Take out rubber seal (seal has oblong holes in it, so when putting it back and the 4 screws go through it, you can line it up correctly)



5. cowl is now slightly loose held on just by hidden spring clips at base of window rubber seal, so slightly lift cowl up at the front and lever it out of these clips carefully by pulling it away from the screen and up over the wiper gear that is still sticking through.



6. Cowl is now off, just held on by the windscreen washer tubes. Lay cowl upside down on a rag so as not to scratch paintwork.



7. To remove washer tube/hose from washer jet, heat hose slightly with a cigarette lighter and pull off (its plastic, so too much heat will melt it, use your initiative!) The nozzles are plastic and can be very brittle, so CARE needed here or you will be looking for new nozzles! Good idea before replacing washer nozzles it to operate the washer shortly to clear any junk in the pipes (which will stick in the tiny nozzles)



Things to do now it is off:

Check the fasteners of the plastic piece in the centre of the cowl, some will be broken – only cure here I am afraid is a new plastic piece!

Check those spring clips around the bottom of the windscreen rubber for rust and clean up this area thoroughly (clips available new if any are broken, **however** to replace any of these spring clips requires removal of windscreen!)

Check around the two screw holes in the corner of the screen that held in the lower chrome finishing, for rust. I had a bit of surface rust, which I scraped off and treated with rust inhibitor and then used touch up paint once all was dry (it is all hidden by the chrome strip, if you are lucky!)

Clean out cowl are of any leaves, junk, dirt etc

Pour a little water down each of the cowl drain holes and check to see it comes out underneath the car, not INSIDE it!

Clean and lubricate all the wiper motor arm linkages with a light spray grease – do this whilst operating the wipers (now there are no arms on them they generally whizz around!)





Replace in reverse order:

Notes:

Check operation of washers and wipers before putting it all back.

Remember to put the rubber seal on the front of the cowl/hood area back in.

When trying to fit the cowl back in, it has to clip under the two prongs of those many spring clips at the bottom of the screen (see next photo) – takes some effort to get it right, use imagination!

Use a bit of silicon spray on the rubber seals between the fenders/wings (left and right of the cowl) as these are a tight fit.

When fitting the lower screen chrome strip, it too has to catch in those clips below the screen – it is a bit of a pain, but patience and care will get it done....remember the 2 plastic end seals left and right under the corners of the chrome strip.

Remember to put wiper arms back on so they align with the marks on the screen.

Clean up the paintwork with some wax polish - Job done.

Some other photos:

Clips holding chrome strip around base of screen – the cowl clips under the two prongs at the top!



Wiper motor with plastic cover and visible is passenger side cowl drain



Wiper motor linkage



Driver side cowl drain hole

